



The Conservation Tillage Day was a wonderful day for the farmers to interact with the Salesman and a lot of the Engineers and Designers for equipment. The Piatt County Soil and Water Conservation District would like to say thank you to all the Companies that took part in this years Tillage Day!!!



Jennings Implement Co.

Central Illinois Ag

Heath's Inc.



Tillage Tool	Average residue
Case IH 5310 Strip Till	64%
Krause Dominator	50%
Case IH 330 Turbo	38%
J.D. 512 Disk Ripper 9 Shank	35%
J.D. 2700 Mulch Tiller 7 Shank	31%
Case IH 870 Ecolo-Tiger	25%
M&W Earth Master	25%



Est. May 12th, 1942

THE BOARD MEETS THE THIRD TUESDAY OF THE MONTH AT THE SWCD OFFICE
MEETINGS ARE OPEN TO THE PUBLIC

SWCD Board Members

Bruce Stoddard, Chairman
John Beckhart, Vice-Chairman
Derrick Bruhn, Secretary-Treasurer
Allen Williams, Director
Bill Meyer, Director
Kurt Robson, Associate Director
Loyd Wax, Associate Director
Dylan Gallagher, Associate Director
Doug Gucker, Associate Director



SWCD Staff:

Jonathon Manuel, R.C.
Phyllis Muse, A.C.
Terre Zeigler CREP

NRCS Staff:

Michelle Lewis, D.C.

Notice of Elections of Directors

To all Owners and Occupiers of lands lying within the boundaries of the Piatt County Soil and Water Conservation District:

Notice is hereby given that an Election will be held on the 2nd day of February, 2010 at 7:00am to 6:00 pm at The USDA Building, 1201 A Bear Lane, Monticello, IL 61856. Three Directors will be elected to serve the Piatt County Soil and Water Conservation District of the State of Illinois.

All persons, firms or corporations who hold legal title or are in legal possession of any land lying within the boundaries of the said district are eligible to vote at said election, whether as lessee, renter, tenant or otherwise. Only such persons and entities are eligible to vote.

Bruce Stoddard, Chairman

Inside: Fish, Tree, and Rain Barrel order form!!!!



Partners for Conservation Program

The program provides cost-share assistance and other financial incentives for the construction or adoption of projects that conserve soil and protect water quality, that reduce soil erosion and improve water quality, Nutrient Management Planning to encourage farm operators to utilize soil testing to increase efficiency of fertilizer use and reduce nutrient transport to water bodies, and special projects to address unique resources concerns to provide for piloting new practices not on the state-wide docket or target specific practices or initiatives that are local priorities



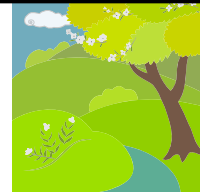
Well Sealing Program

The Piatt County Soil & Water Conservation District is able to help cost share 60% up to \$400 on sealing wells. If you or someone you know needs help in sealing an old well please contact the Piatt County SWCD.



Special Projects Program

A special projects program is designed much like a small grant. The goal of the program is to protect soil & water. The only limits to this program is that you must be able to show a benefit to soil & water. If you have an idea for a project call 1-217/762-2146 ext.3.



Streambank Stabilization and Restoration Program

The primary goals of the SSRP are to develop vegetative, stone structure and other low-cost bio-engineering techniques for stabilizing streambanks and to encourage the adoption of low-cost streambank stabilization projects by making available financial incentives, technical assistance and educational information to land users with critically eroding streambanks.

Items for Rent



The Nut Collector is excellent for gathering nuts for future plantings or to just help clean up in your yard. The Fingers will collect Walnuts, Pecans, Acorns, Chestnuts, Hickory nuts and many others. The nuts will stay in the fingers until the nuts are pulled out by the basket. Then you can simply unload the baskets by pulling the rope handle. The Nut Collector takes very little effort to operate. Cost of renting: 1 Day \$5.00 3 Days \$10.00



SCRAPER

Need to clean up your waterway or level out the spoils from the drainage ditch! Come on in to the office and rent the Buffalo Scraper. The Scraper rents for only: \$125 for two working days or \$75 for one working day.



Farmers Must Access Wet Fields with “Conservation Care”

“a wet summer and a wet fall have created serious harvest delays and now you have to get out there even though you know it’s too wet for traffic in the fields,” says Gradle (Illinois State conservationist for the Natural Resources Conservation Service). Because NRCS knows farmers must follow their USDA compliance plan and get into their fields, NRCS would like to offer a few suggestions on how to successfully approach the sticky situation.

“We know your fields are wet. We know ruts and compaction are - or will be- a real problem out there,” says Gradle. Although tilling the soil may not be allowed in your conservation compliance plan, it may in fact be the only way to re-establish a drive-able landscape that you can plant into next spring. Here are some steps to take to keep you in compliance for your Highly Erodible Land.

1. Grab your camera. Take a few photographs to document field conditions you face. If ruts exist or residue has drifted into piles, pictures will confirm that situation. Keep the pictures for later use and evidence just in case your tract comes up for a random spot review or a whistleblower reports it.
2. Don’t till up the entire field for just a few bad spots. Use tillage only in true problem spots; only perform the amount needed to till in ruts or break up compaction soils. Only till damaged areas that need it-leave other areas alone.
3. if you have other critical areas or problems or special circumstances that call for unique or extreme measures, photograph them and be sure to let your NRCS staff know what the situation is. They can advise you on what action will work best and will be familiar with it if your land shows up on a spot review some time next year. They can make a note of it for later reference, if needed.

Keeping these guidelines in mind should give producers peace of mind as they deal with current conditions and worry what it may mean for next year. If you run soil tests or have other records that document conditions and worry what it may mean for next year. If you run soil tests or have other records that document conditions, keep them; have them available.

Remember, when conducting compliance reviews, NRCS always looks at recent and long-term conservation history. If you must perform management techniques that fall outside of your usual and ordinary activities, NRCS must ensure the tillage or operations performed were indeed necessary and were the best management decision or option available.

According to gradle, “if you approach the problem sensibly, document actual conditions and the decisions you’ve communicated with NRCS, you can remain in conservation compliance. For more information about these special compliance issues, visit with your NRCS staff located at your county USDA service Center today!



2010 Envirothon Planning for the 2010 Land Use Council 6 Envirothon

Is well under way. This year the Envirothon is planned to be held at Weldon Springs out side of Clinton Illinois. This is a wonderful site to help show students really life plants. The date set for the competition is **April 7th**. Envirothon is a natural resource education program sponsored by local Soil and Water Conservation Districts for High School students. The Envirothon emphasizes hands-on, team oriented problem-solving skills. The team is tested on their knowledge in the areas of Aquatics, Forestry, Soils, and Wildlife.

Five member teams, representing a High School are formed. Long before the competition starts teams begin by studying resource material to learn the fundamentals of each category. At the competition students visit in-the-field test stations where presentations are given by resource professionals. They are challenged to work as teams to answer written questions and conduct hands-on problem solving situations focusing on each of the four environmental areas. The program is competitive but learning is the bottom line!

Would you like to be a sponsor?

We are looking for sponsors to help cover the costs of speakers and trophies for the participants.

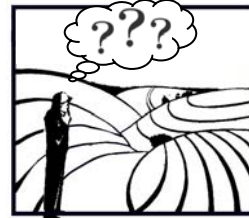
If you would like to be one please contact the office.



Phone: 217-762-2146 Ext.3

**“Tillage & Technology:
Impacts Above and Below the Soil Surface”
2010 Illinois Tillage Seminar**

**Tuesday, January 26, 2010
Hotel Pere Marquette
501 Main St., Peoria
(5.5 CCA SWM CEUs approved)**



– AGENDA –

<p>8:00 – 8:45 a.m. Registration Meet with Agri-business Exhibitors, Coffee & Rolls</p> <p>8:45 – 8:50 a.m. Opening Remarks and Welcome</p> <p>8:50 – 9:20 a.m. New IL Soil Erosion and Tillage Trends – Joe Bybee, IL Department of Agriculture</p> <p>9:20 – 10:15 a.m. Cover crops, tillage and soil quality – Dr. Joel Gruver, Agronomist, Western IL University</p> <p>10:15 – 10:30 a.m. Break</p> <p>10:30 – 11:20 a.m. Managing Soil Moisture and Water Quality with Conservation Drainage – Dr. Richard Cooke, U. of IL Ag Engineering</p> <p>11:20 a.m. – 12:15 p.m. Residue and Tillage Mgt. impact on Weeds – Russ Higgins, IPM Educator, U. of IL</p> <p>12:15 – 1:00 p.m. Lunch and Meet with Agri-business Exhibitors</p>	<p>1:00 – 1:50 p.m. Monitoring Streamflow, Rainfall and Water Quality in IL – Gary Johnson, US Geological Survey, Champaign</p> <p>1:50 – 2:40 p.m. Managing Residue and Tillage on Saturated Soils for Optimum Production and Long-term Effects of Tillage on Soils – Dr. Tony Vyn, Agronomist, Purdue University</p> <p>2:40 – 3:15 p.m. Managing No-till/Strip-till On-site to Optimize Crop growth and Environmental & Economic Considerations – Matt Hughes and Doug Thompson, IL Corn and Soybean producers</p> <p>3:15 p.m. Seminar Adjourns, Meet with Exhibitors and Speakers</p> <p>(Note to CCA’s: 5.5 SWM CEU’s approved)</p>
---	--

SPONSORED BY:



REGISTRATION INFORMATION

DEADLINE IS JANUARY 19, 2010 - Preregistration with payment is Necessary!

**On-line credit card registration can be made at:
<http://web.extension.uiuc.edu/rockfordcenter>**



The Collection has taken in 5,200 Lbs so far in 2009. We have had to empty the trailer three times in two months.

This is not the responsible way to dispose of TV’s **Don’t kill our wild life - Recycle!!!**

E-Recycling Collection Day

Wednesdays

8 a.m. – 4 p.m.

Piatt County SWCD Parking Lot At: 1201 Bear Lane, Monticello, IL 61856

Bring Your:

Radios, TV’s, Stereos, VCRs, DVD Players, etc. -- Cell Phones and Accessories -- Computers & Computer Related Items: Disc Drives, External and Internal Computer Components, Cords, power strips, cables and mouse, Monitors, Speakers, TVs and Microwaves – anything that runs on batteries or plugs in with the exception of white appliances and light bulbs.

Disposal Fees:

Due to a new State Law, Effective January 1, 2010

Residential Items are FREE

Businesses are Welcome to Participate, Please contact the office for disposal fees

Piatt County Soil and Water Conservation District
2010 Annual Spring Tree Sale

KEY
B=Beautiful fall color **C**=Conservation tree **F**=Flowering **H**=Good for wildlife
I=Introduced species **N**= Native species **U**=Produces fruit or nut **W**=Good in wet areas

EVERGREENS:

Austrian Pine (*Pinus nigra*) C, I, Fast growing, cone bearing pine with long dark green needles, height 60', well suited for almost any area. Very good windbreak tree.

Eastern White Pine (*Pinus strobus*) N,H,C, Largest northeastern conifer, long soft needles, height 100', prefers well drained sandy soils. Good windbreak tree

Blue Spruce (*Picea pungens*) C,H, Has silvery blue to blue green needles, grows well in most soils except very wet areas. height 80', used as Christmas trees and windbreaks

Norway Spruce (*Picea abies*) C,I,H, Large, cone bearing tree with straight trunk and cone shaped crown of branches, height 80', Used as Christmas trees and windbreaks.

Douglas Fir (*Pseudotsuga menziesii*) C,I, Soft medium length needles, fast growing, height 30'-50', Prefers better soil and good drainage.

DECIDUOUS:

Black Walnut (*Juglans nigra*) H,N,W,U, Large tree with open, rounded crown of dark green aromatic foliage, height 70'-90', prefers moist well drained soils along streams, scattered in mixed forests.

Pin Oak (*Quercus palustris*) H,N,U,W Straight trunk with spreading horizontal branches with slender pin like branches, height 50'-90', prefers poorly drained wet sites, easily transplanted because shallow root system lacks a tap root.

Red Maple (*Acer rubrum*) B,N,W, New USDA cultivar selected for its fiery red autumn leaf color, large tree with narrow or rounded compact crown, height 50'-80', wet or moist soils of stream banks, valleys and uplands.

Sugar Maple (*Acer saccharinum*) B, C, Unrivaled hard-wooded tree. Stately, long-lived. Rich autumn foliage coloring.

Tulip Tree (*Liriodendron tulipifera*) B,C,F A stately tree up to 100 feet tall, Flowers a two inches, cup-shaped, with six yellow-green petal with an orange base surrounding a cone-shaped cluster of pistils.

Eastern (Northern) Red Bud (*Cercis Canadensis*) A large shrub or small tree up to 30 feet. Flowers a very showy, pea-like pink to light purple in color.

SHRUBS:

White Flowering Dogwood (*Cornus florida*)B,C,F,H,N,U,W, Dense green foliage turns bright scarlet in fall, attractive white flowers followed by red berry clusters, height up to 40', Grows best in moist and wet soils.

American Cranberry Bush (*Viburnum trilobum*) B,C,F,H,N,W,U , deciduous shrub , white flowers in clusters in May, Scarlet berries midsummer through winter, height 8'-12', good plant for wildlife and wet areas.

Old Fashion Lilac (*Syringa vulgaris*) B,C,F Strong-growing, very hardy, tall-growing shrub bearing large trusses or fragrant-scented lilac blooms. Thick, dark, attractive foliage.



Last day to order Trees is March 12th 2010.

Pick up is on April 1st or 2nd 2010.

Name _____

Address _____

Town _____ State _____ Zip code _____

Daytime phone _____ Cell Phone _____

Tree species bare root	Size	Pricing	Quantity	Subtotal \$
Deciduous				
Black Walnut	6"-12"	\$3.50 each		
Pin Oak 3"pot	6"-12"	\$3.50 each		
Red Maple 3"pot	6"-12"	\$3.50 each		
Sugar Maple	6"-12"	\$3.50 each		
Tulip Tree	18"	\$3.50 each		
Red Bud 3"pot	3"-6"	\$3.50 each		
Evergreens				
Austrian Pine 3"pot	6"-12"	\$3.50 each		
Eastern White Pine 3"pot	6"-12"	\$3.50 each		
Blue Spruce 3"pot	6"-12"	\$3.50 each		
Norway Spruce 3"pot	6"-12"	\$3.50 each		
Douglas Fir 3"pot	6"-12"	\$3.50 each		
Shrubs				
White Flowering Dogwood	18"	\$3.50 each		
American Cranberry Bush 3"pot	6"-12"	\$3.50 each		
Old Fashion Lilac 3"pot	6"-12"	\$3.50 each		

	Pricing	Quantity	Subtotal \$
Blue Spruce, one gallon pot	\$6.75 each		
Norway Spruce, one gallon pot	\$6.75 each		
White Pine, one gallon pot	\$6.75 each		

Total Cost \$ _____



Complete form and mail along with your check to: Piatt County SWCD
1201 A Bear lane

(Make check payable to: Piatt County SWCD) Monticello, IL 61856

Phone: (217)-762-2146

These trees are for conservation purposes and carry NO warranty, expressed or implied, as to the live ability of the seedlings after pick up. All orders taken with the understanding that the Piatt County SWCD shall not be liable in the event of crop loss or damage from other natural causes which we have no control. The Piatt County SWCD is not responsible for the condition of trees not picked up on scheduled date or delays from the grower.

Fish Descriptions



Happy Fishing!!!!!!



Straight Bluegill: are an excellent sport and pond fish that grows a little slower than sunfish. Bluegill will hide in old logs or around plants in the water. They will bite on many different kinds of bait. When the pond is not over populated Bluegill will grow to be 7 to 10 inches long.

Redear: Are recommended for deeper ponds and can be stocked along with Bluegill or Hybrid Sunfish. They are deeper water fish, feeding on snails, and are usually harder to catch except during spawning season when they are in the shallows.

Hybrid Sunfish: Are a good choice for smaller ponds. This hybrid cross between a male Bluegill and a female Green Sunfish results in a 90% male, 10% female population, which limits population growth. Hybrid Sunfish can reproduce if Bluegills are also present.

Largemouth Bass: Are one of the most popular fish in America. They are predators and work well to help control Bluegill and Crappies populations.

Channel Catfish: Are compatible with all species in lakes and ponds, and work especially well with Hybrid Sunfish and Largemouth Bass.

Black Crappie: Black Crappie is a Schooling fish that like water with lots of structures and hiding places. They do an excellent job controlling insects. Crappie average 8 to 16 inches long.

Fathead Minnows: are especially important when stocking new ponds as a forage crop for other game fish. You should stock at a rate of 1000 per surface acre. Fathead Minnows will grow between 2 and 3 inches long and reproduce in the spring.

Triploid Carp: Is an alternative to using chemicals for weed control. This fish will not reproduce and when the proper numbers are stocked the need for chemicals or mechanical weed cutters for weed control will be minimized. Grass Carp will only eat pond weeds. These Carp eat most aggressively in the summer months. Good results are usually seen after a second season. For continued control of severe weed problem, fish should be restocked every 3 to 5 years.



Last day to order fish is March 5th 2010. Pick up is at 1:00 pm on March 19th 2010.

Name _____

Address _____

Town _____ State _____ Zip code _____

Daytime phone _____ Cell Phone _____

Pond Location, Township: _____ Section: _____ Pond acreage: _____

Fish species	Size	Pricing	Quantity	Subtotal \$
Straight Bluegill	1"- 2"	\$55 / 250 (bag)		
	3"- 5"	\$0.65 each		
Redear	1"- 2"	\$55 / 250 (bag)		
	2"- 4"	\$0.40		
Hybrid Sunfish	1"- 2"	\$55 / 250 (bag)		
	3"- 5"	\$0.65 each		
	5"- 7"	\$1.00 each		
Largemouth Bass	2"- 3"	\$0.75 each		
	5"- 8"	\$1.50 each		
Channel Catfish	4"-6"	\$0.50 each		
	6"-8"	\$0.65 each		
	* 8"-10"	\$0.85 each		
(250 Lb min order)*	1-2 Lb	\$2.00/Lb		
Black Crappie	2"- 3"	\$45 / 100 each		
Fathead Minnows	100/Lb	\$8.00 / pound		
Triploid Grass Carp	8"- 11"	\$8.50 each		

Last day to order Triploid Grass Carp is March 1st 2010.

Total Cost \$ _____

Pond delivers available on orders over 1,000 fish (\$100.00 charge) Yes ___ No ___

* = Channel Catfish **CAN NOT** be bagged. Please bring a clean container with pond water. Plastic trash cans and small horse troughs work well.

Complete form and mail along with your check to: Piatt County SWCD

1201 A Bear lane

(Make check payable to: Piatt County SWCD) Monticello, IL 61856

Phone: (217)-762-2146

www.PiattCountySWCD.com



Rain Barrel Diverter

You no longer have to worry about an overflowing rain barrel!

The Rain Reserve® diverter is a system that attaches to your downspout and will direct the rain water into your rain barrel. After the rain barrel is full, the diverter will **auto-matically re-direct the rain water back into the downspout**. Our diverter kit with Rain Reserve® has been designed to fit all of our rain barrels, but will also work with most any open top or closed top rain barrel, as long as the rain barrel has a male hose connection on or near the top of the barrel. The diverter can be installed above the rain barrel, if it is a closed top system, but must be installed even with the top of the rain barrel, if it is a model with holes in the top.



Rain Barrel	Pricing	Quantity	Total
Diverter	\$30.00		

Last day to order is March 12th 2010 Pick up is on April 1st or 2nd 2010

Name _____

Address _____

Town _____ State _____ Zip Code _____

Daytime phone _____ Cell Phone _____

Complete form and mail along with your check to: Piatt County SWCD

1201 A Bear Lane

(Make check payable to: Piatt County SWCD) Monticello, IL 61856

www.PiattCountySWCD.com



Rain Barrels

Save The Rain For A Sunny Day!!

A rain barrel connected to your downspout is a great way to cut down on your water bill!
Benefits of Diverting Water from the Downspout:

- Naturally softened water – great for delicate houseplants, window and auto cleaning
- Saves money by lowering your water bill
- Chlorine-free water helps maintain a healthy biotic community in the soil
- Lowers the percentage of roof top rainfall as a component of urban runoff
- Backup source of water during times of drought or between rain showers

The Rain Barrels have a bottom drain plug, screw on top with one inch holes, screen mesh to keep out debris and mosquitoes.



Blue

Grey

Black

Terra Cotta

Rain Barrels Color	Size	Pricing	Quantity	Total
	60 Gal	\$89.00		
	60 Gal	\$89.00		

Last day to order is March 12th 2010

Pick up is on April 1st or 2nd 2010

Name _____

Address _____

Town _____ State _____ Zip Code _____

Daytime phone _____ Cell Phone _____

Complete form and mail along with your check to: Piatt County SWCD

1201 A Bear Lane

(Make check payable to: Piatt County SWCD) Monticello, IL 61856

Piatt County Soil and Water Conservation District
 1201 A Bear Lane
 Monticello, IL 61856

Non Profit
 U.S. Postage Paid
 Monticello, IL 61856
 Permit # 14

www.PiattCountySWCD.com



Composters

Ruggedly Built and Durable Composter

- ❖ 60 gallon food grade barrel
- ❖ Frame work 2 inch by 1/4 inch rolled steel
- ❖ Designed to be moved
- ❖ Barrels have UV treatment built in
- ❖ 2 more coats of UV treatment have been applied
- ❖ Screw on wide mouth lid
- ❖ Holes in top and bottom to allow water movement



Single Barrel



Double Barrel

Calendar of Events

January 18th Martin Luther King Day (office Closed)
 January 19th SWCD Board Meeting
 January 26th 2010 Illinois Tillage Seminar

February 2nd Board Elections at USDA office
 February 15th Presidents Day (office Closed)
 February 16th Piatt County SWCD Board Meeting

Composter	Pricing	Quantity	Total
Single Barrel	\$230.00		
Double Barrel	\$360.00		

Last day to order is March 12th 2010

Pick up is on April 1st or 2nd 2010

Name _____
 Address _____
 Town _____ State _____ Zip Code _____
 Daytime phone _____ Cell Phone _____

Complete form and mail along with your check to: Piatt County SWCD
 1201 A Bear Lane
 Monticello, IL 61856
 (Make check payable to: Piatt County SWCD)

The Piatt County Soil and Water Conservation District does not discriminate against any person on the basis of race, color, national origin, religion, sexual orientation, gender, age, marital status, veteran's status or disability. This policy covers all programs, services and procedures of the District, including employees.